

# Ginninderra Falls – conservation values

- with extracts from Worboys et al., 2015

*“Whether we believe we are exercising power over nature or feel that nature is controlling us, whether we seek power from nature or simply feel at peace within it, we all live with nature and make sense of that interaction in order to survive and add meaning to our lives.”*

*Doug Finlayson  
Cook Community Centre*

*- 31 Oct 2019*



## Protected Area Governance and Management

Editors: Graeme L. Worboys, Michael Lockwood, Ashish Kothari, Sue Feary and Ian Pulsford



IUCN (International Union for Conservation of Nature)

Citation: G.L. Worboys, M. Lockwood, A. Kothari, S. Feary and I. Pulsford (eds) (2015) Protected Area Governance and Management, ANU Press, Canberra.

- 1. The Ginninderra Falls are not listed on the NSW Heritage Register and therefore have no statutory protection under the NSW Heritage Act.*
- 2. The ACT National Trust has the Falls listed on the Classified Places Register but that is a non-statutory list.*
- 3. The Falls were also listed as an ‘Indicative Place’ on the former, but now superseded, Register of the National Estate (RNE). The RNE now exists only as the Australian Heritage Database which is now a non-statutory list.*

*Ginninderra Falls and surrounding area is not currently protected by any legislation.*

*That does not mean that we cannot advocate for the issues that may apply from NSW legislation.*

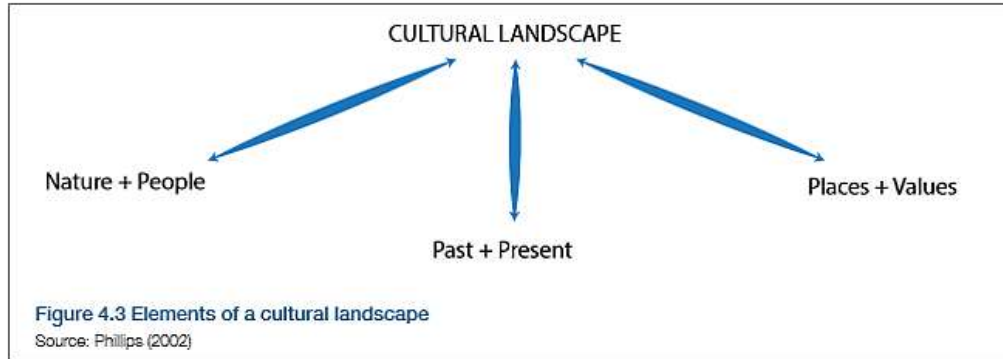


## Heritage Council of NSW Criteria

- a) An item is important in the course, or pattern, of NSW's cultural or natural history.
- b) An item is important in demonstrating aesthetic characteristics.
- c) An item has strong or special association with a particular community or cultural group for social, cultural or spiritual reasons.
- d) An item has potential to yield information that will contribute to an understanding of NSW's cultural or natural history.
- e) An item possesses uncommon, rare or endangered aspects on NSW's cultural or natural history.
- f) An item is important in demonstrating the principal characteristics of a class of NSW's cultural or natural places or cultural or natural environments.

*Consider these criteria when assessing development applications connected with the "Ginninderry" township development.*





*“Promotion of protected areas for their recreation opportunities requires management responses to ensure against potential environmental degradation and, in some cases, this means exclusion of certain human activities.”*



*“As we enter the 21st century, ....a better integration of local custodianship and support.”*

Worboys et al, 2015



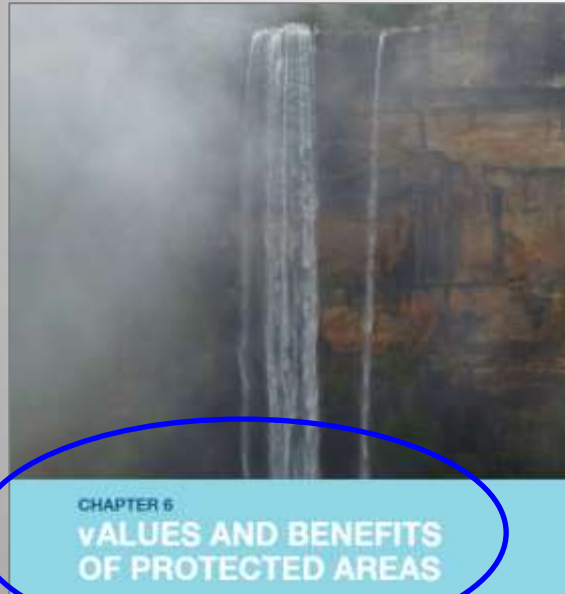
*“Connectivity is not a new technical process of conservation; each case involves substantial engagement with society and interest groups.”*

*“A new form of social compact that marries diverse interests, cultures and values within an overall paradigm of cooperation.”*

## Protected Area Governance and Management

Editors: Graeme L. Worboys, Michael Lockwood, Ashish Kothari,  
Gus Feary and Ian Pittford

## Chapter 6



*“Protected areas are places where conscious efforts are made to preserve not only wild species, but also the ecosystems in which species live.”*

Worboys et al, 2015

*“There is wide agreement that we have an ethical obligation to maintain the full range of the planet’s living diversity.”*

*“The cultural and historical values found within protected areas are very important.”*

# Protected Area Governance and Management

Editors: Graeme L. Worboys, Michael Lockwood, Ashish Kothari, Sue Feary and Ian Pulsford

## Chapter 7

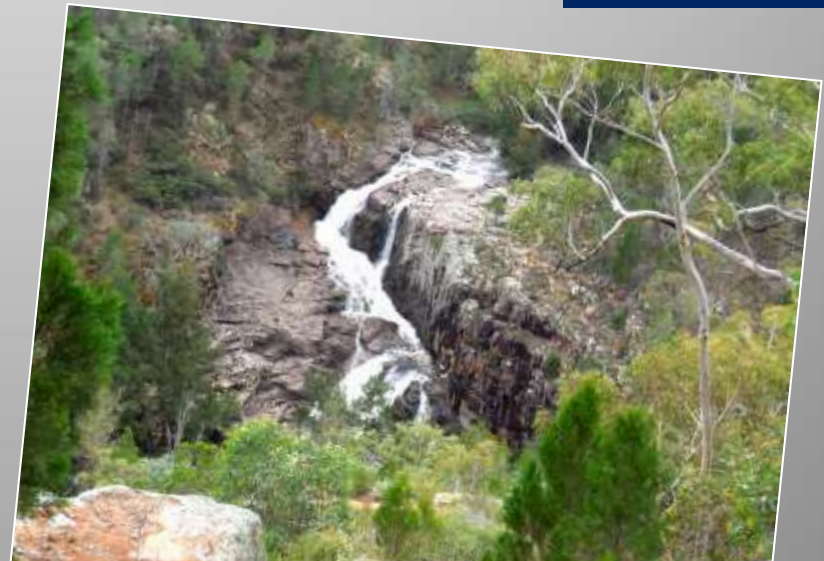


*“A wise governance setting is one in which decisions of meaningful scope are taken, which enhance the common good and solidarity and which not only allow, but also foster, the engagement of all relevant actors in society.”*

Worboys et al, 2015

*For the “Ginninderry” township urban development, the principles and guidelines set out in the NSW Conservation Council and Worboys publications should be rigorously enforced by the Yass Valley Council and the NSW Government to achieve - -*

*“- - resilient ecosystems and biodiversity for improved conservation outcomes (NSW Dept of Environment web site).”*



*Primary aspiration - a shared vision to protect natural and cultural heritage for the long term.*

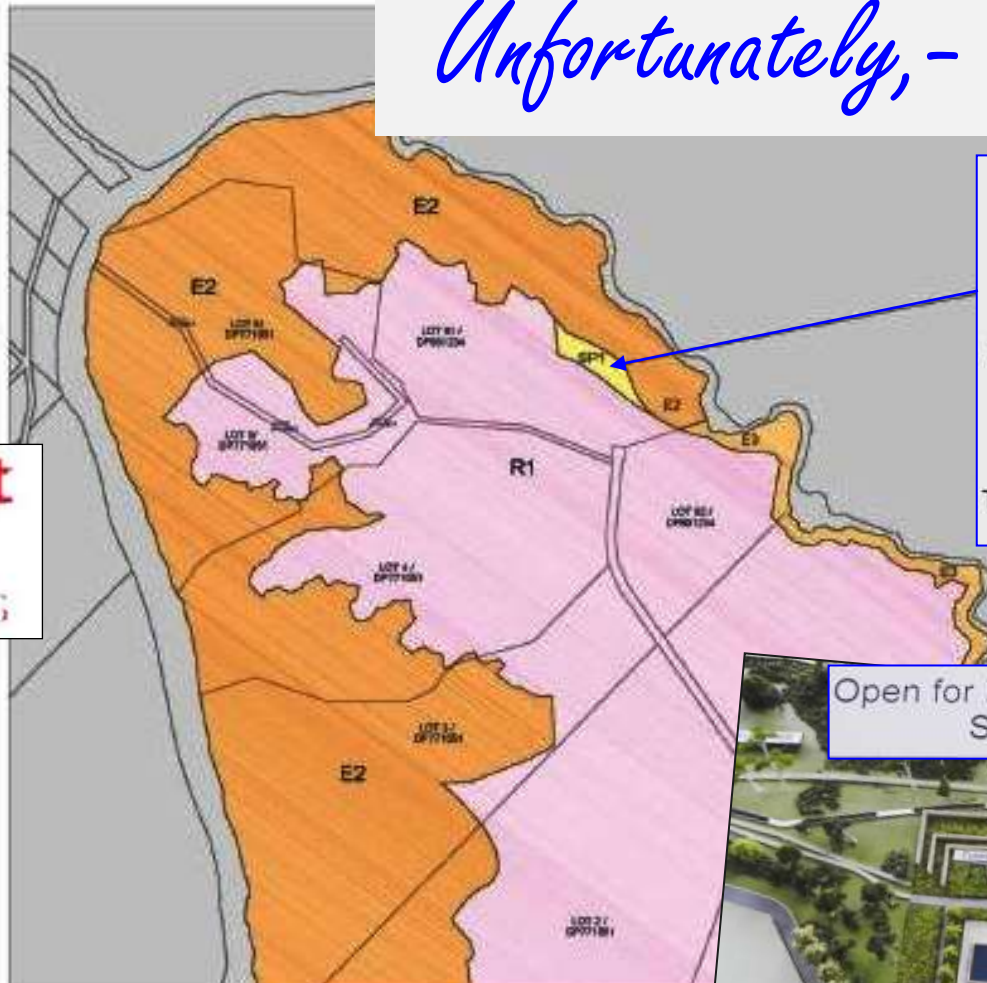


*Unfortunately, - -*

Proposed Zoning Map

- Zone:
- E2 Environmental Conservation
  - E3 Environmental Management
  - R1 General Residential
  - SP1 Special Activities

Catchment:  
System



- Ginninderra Falls Precinct:
  - Car park,
  - Community facilities,
  - Eco-tourist facilities,
  - Emergency service facilities,
  - Environmental facilities,
  - Information and education facilities,
  - Kiosks,
  - Restaurant or café,
  - Roads,
  - Signage,
  - Take away food and drink premises,
  - Hotel or motel accommodation.

Open for Public Access approx. 2023  
Subject to Rezoning



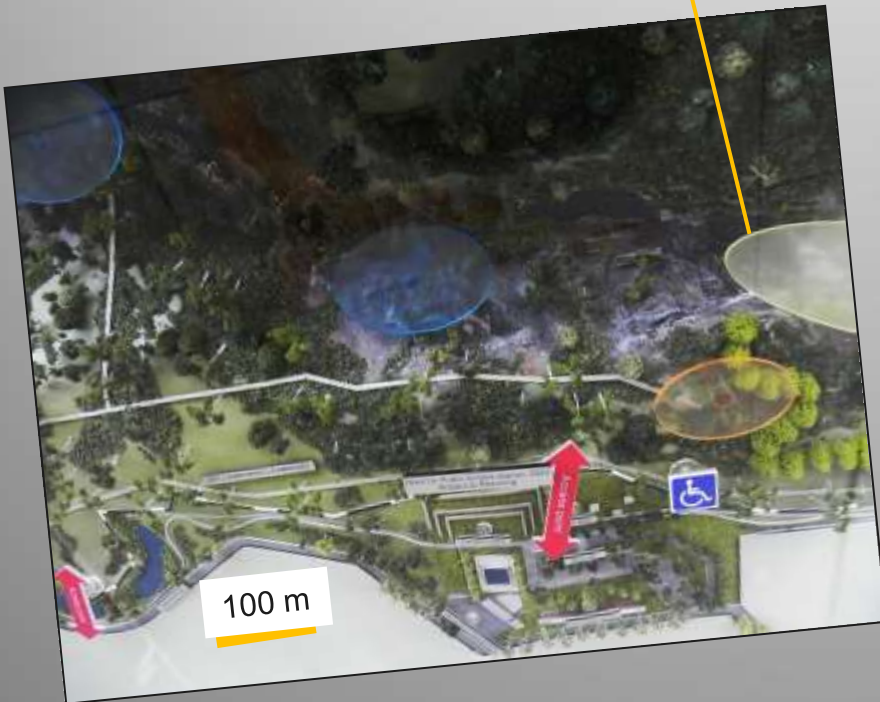
*- - the current planning proposals for the "Ginninderry" township fall far short of this primary aspiration.*





- Ginninderra Falls Precinct:
- Car park,
- Community facilities,
- Eco-tourist facilities,
- Emergency service facilities,
- Environmental facilities,
- Information and education facilities,
- Kiosks,
- Restaurant or café,
- Roads,
- Signage,
- Take away food and drink premises,
- Hotel or motel accommodation.

2010



Open for Public Access approx. 2023  
Subject to Rezoning



*Finis*